



ONCC ALGORITHM
Decision-Making
for
New Programs

Cyndi Miller Murphy MSN RN CAE
Executive Director

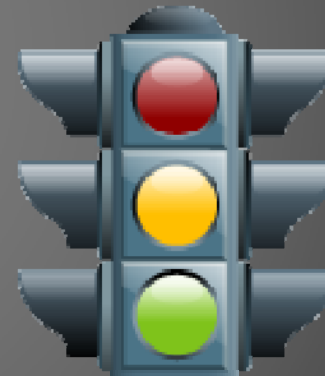
INQUIRIES AND REQUESTS FOR NEW CERTIFICATION PROGRAMS

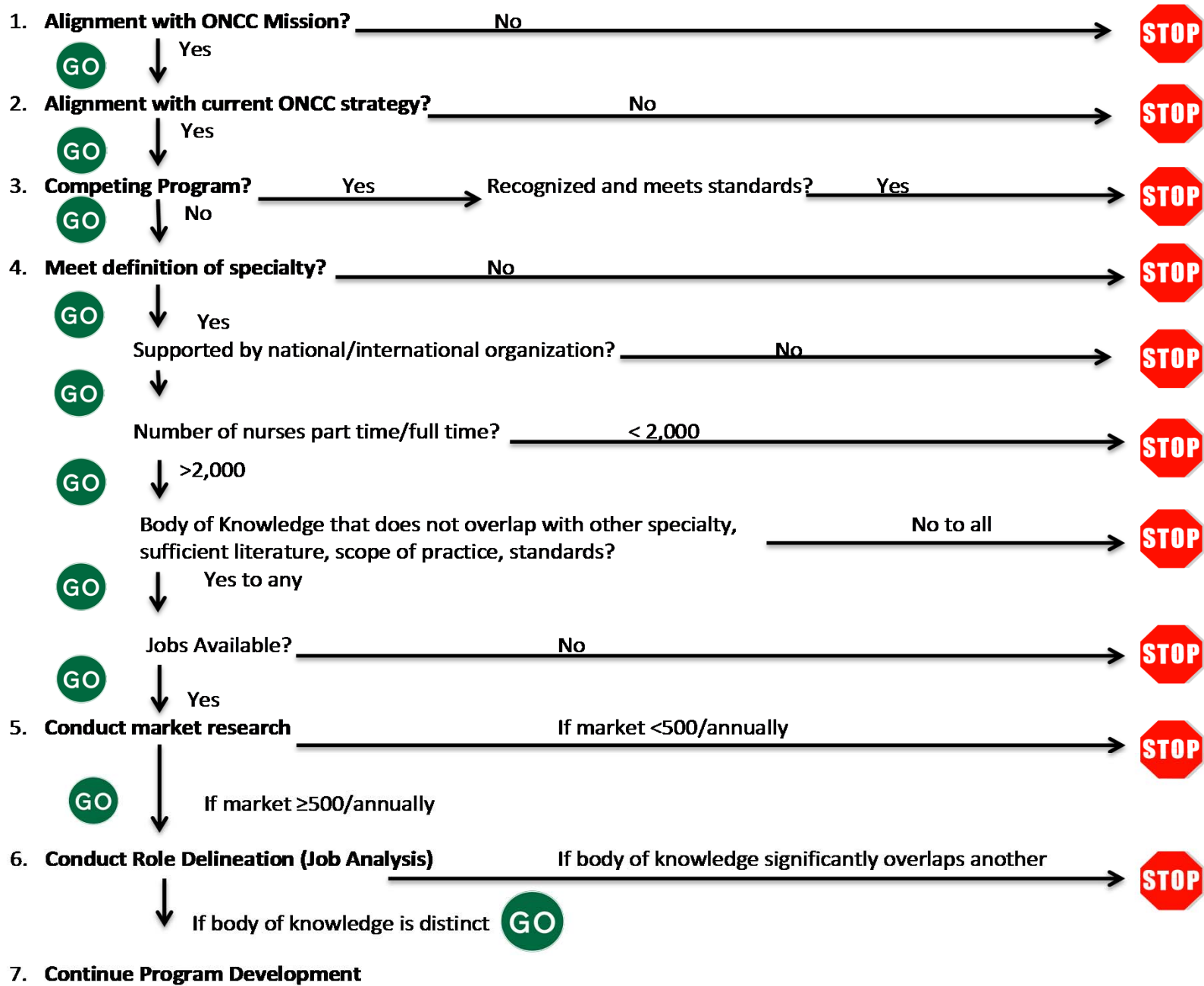
ONCC has always employed appropriate data gathering, deliberation and decision-making

- Recently decided to document the standardized decision-making algorithm
 - Ensure efficient decision-making
 - Easily provide rationale for decisions to the constituency

ALGORITHM = A SERIES OF QUESTIONS

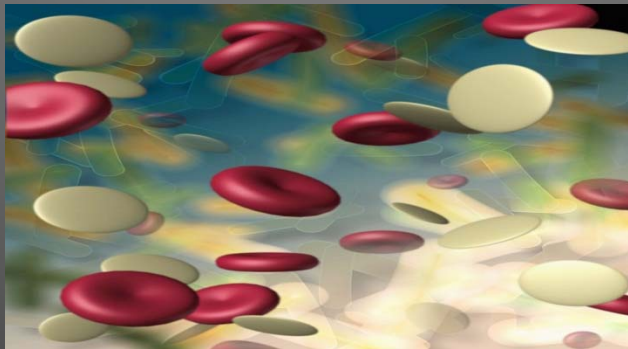
- The answer to each question determines whether the process should stop or continue on to the next step
- “Traffic light approach”
- Completed algorithm provides the rationale for the decision





APPLICATION OF THE ALGORITHM BY EXAMPLE

Most recent decision-making on a certification program in **blood and marrow stem cell transplantation (BMT) nursing**



QUESTION 1

Is the program in alignment with the ONCC
Mission *to promote excellence in patient care
and professional practice by validating
specialized knowledge in oncology nursing and
related specialties?*

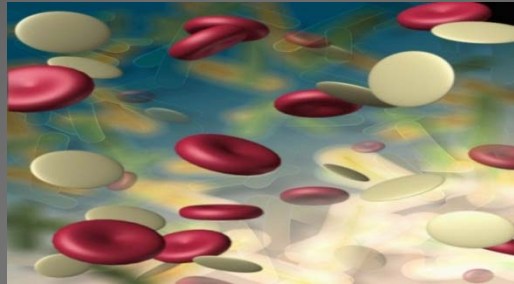
YES = GO



NO = STOP



BMT Nursing-> YES



BMT, although also used for non-malignant conditions, is most often used to treat malignancies and is therefore closely related to oncology nursing



→ GO TO NEXT STEP

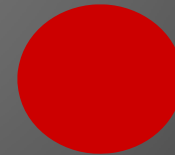
QUESTION 2

Does the program align with ONCC's current strategic goals?

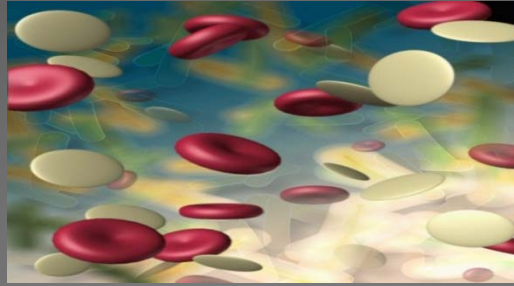
YES = GO



NO = STOP



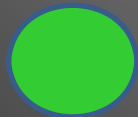
BMT Nursing-> YES



ONCC Strategic Plan 2010 - 2013

Goal Area: *Subspecialty Recognition*

Goal Statement: *ONCC will recognize nurses in subspecialty areas of oncology for their knowledge*



→ GO TO NEXT STEP

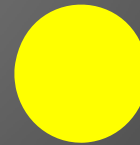
QUESTION 3

Is a competing or potentially competing program (certification, certificate program or other) offered by another entity?

NO = GO



YES = LOOK CLOSER/PROCEED
WITH CAUTION



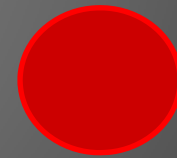
QUESTION 3 - continued

If yes, is it recognized by a variety of stakeholders (e.g. employers, accrediting bodies) and does it meet nationally accepted standards?

NO = GO



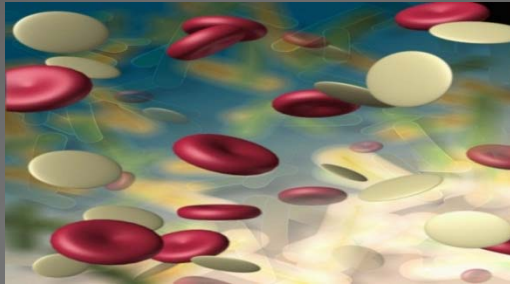
YES = STOP



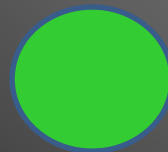
PARTIALLY = CONTINUE TO LOOK



BMT Nursing-> NO



There are currently no certification or certificate programs in blood and marrow transplantation nursing.



→ GO TO NEXT STEP

QUESTION 4

Would the program meet or potentially meet the ABNS Definition of a Nursing Specialty as defined by the American Board of Nursing Specialties Accreditation Standards (revised in June 2012)?

Definition: “The certification examination program is based on a distinct and well-defined field of nursing practice that subscribes to the overall purpose and functions of nursing. The nursing specialty is distinct from other nursing specialties and is national in scope. There is an identified need for the specialty and nurses who devote most of their practice to the specialty.”

QUESTION 4a

Is there evidence of the professional and scientific status of the specialty?

- Body of scientific knowledge that is unique and distinct from that of basic nursing and provides the theoretical underpinning for the specialty?
- Supported by professional organization(s)?

YES = GO



NO = STOP

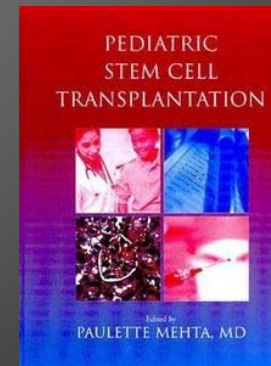
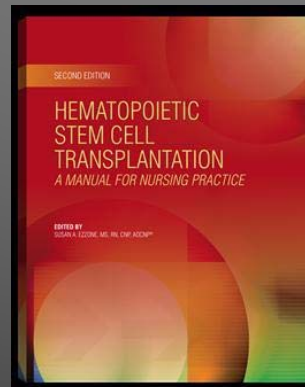


BMT Nursing-> YES



Unique body of scientific knowledge- CE/ Literature

- *Fundamentals of Blood and Marrow Transplant Web course*
- *Health-Related Quality of Life of Hematopoietic Stem Cell Transplant Childhood Survivors: State of the Science*
- *Lipid Profiles of Pediatric Hematopoietic Stem Cell Transplant Survivors*



BMT Nursing-> YES



Supported by professional organizations-

- The **American Society for Blood and Marrow Transplantation** is an international professional association for clinical and research professionals that promotes the advancement of the blood and marrow transplantation field.
- The **Oncology Nursing Society** supports this subspecialty with a Special Interest Group, educational programming and publications.



→ GO TO NEXT STEP

QUESTION 4b

Is there evidence of a societal need for patient care in the specialty and a pool of providers who concentrate their practice in the specialty?

- Number of nurses who practice in the specialty?
- Jobs available?

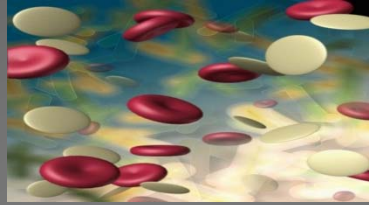
> 2,000 = GO



< 2,000 = STOP



BMT Nursing-> YES



BMT Performed Annually in US

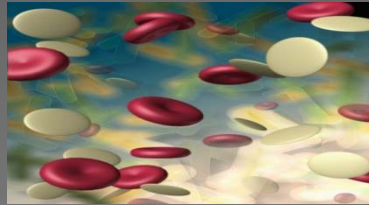
Autologous >8,000

Allogeneic > 7,000



→ GO TO NEXT STEP

BMT Nursing-> YES



ONCC Certified: BMT specialty	2,628
ONS (not certified): BMT specialty	1,197
ONS BMT SIG member	3,048
APHON: BMT specialty	430
Nurse attendance ASBMT conference	480
Estimated universe	8,000

 → GO TO NEXT STEP

QUESTION 5



Is there a sufficient market to support and sustain the program?

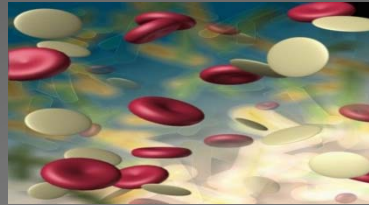
- Determine limits for the organization: what is the minimum number of candidates needed for a program to be self-sustaining?
- Conduct and analyze market research
- Estimate the number of candidates

> 500 = GO

< 500 = STOP



BMT Nursing-> YES



Electronic Survey--Random sample 4,848 BMT nurses

Response = 687 (14%)

Strong interest in stand-alone certification (no prerequisite credential required)

Noncertified- 82% “very” and 12% “somewhat” likely to pursue

Certified – 80% likely to pursue and maintain current certification

12% likely to pursue and not maintain current certification

Moderate interest in pre-requisite required certification

Moderate interest in certificate program



→ GO TO NEXT STEP

QUESTION 6

Is there a distinct body of knowledge that does not significantly overlap with other programs?

- Conduct a role delineation study (job analysis)
- Compare results (test blueprint/ content outline) with existing programs

YES = GO



NO = STOP



BMT Nursing-> YES



2011 role delineation study revealed a distinct body of knowledge with very minimal overlap with the other oncology certifications



PROCEED TO PROGRAM DEVELOPMENT

QUESTIONS

